

# Word of the Day

## Autumn Term 2024

Week 13 – 2nd December 2024



*'Words unlock the doors to a world of understanding...'*

# This Week's Words

Grasshopper

**smash**

**snore**

**tunnel**

**upset**

**visit**

Shinobi

**swerve**

**sudden**

**prefer**

**smug**

**obsess**



**VOCABULARY NINJA**

# Grasshopper (Tier 1)

**smash**

**snore**

**tunnel**

**upset**

**visit**



**VOCABULARY NINJA**

# Shinobi (Tier 2)

**swerve**

**sudden**

**prefer**

**smug**

**obsess**



**VOCABULARY NINJA**



# Grasshopper Word of the Day

Word of the Day:

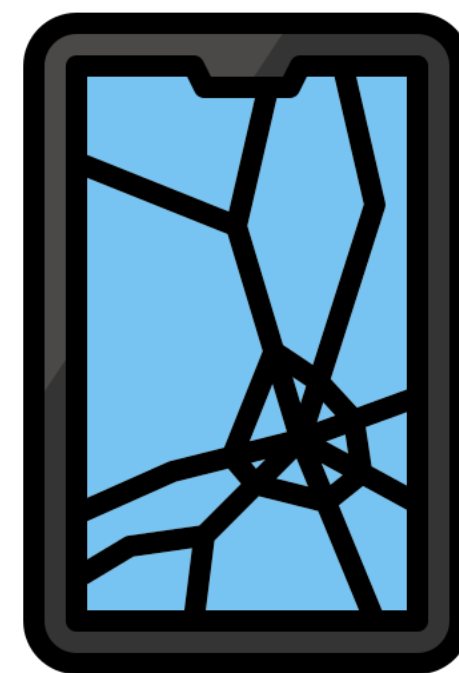
Pronunciation / Syllables

**smash**  
(*smash*)

Word Class  
(verb)

Definition:

If you smash something or if it smashes, it breaks into many pieces.



Neil **smashed** the screen on his tablet.

Synonym:

bash

wreck

Antonym:

fix

mend

Prefix / Suffix:

-ed

-es

Rhyme:

cash

clash

Link Word:

loudly

forcefully



# Grasshopper Word of the Day

Word of the Day:

Pronunciation / Syllables

**snore**  
(snore)

Word Class  
(verb)

Definition:

When someone who is asleep snores, they make a loud noise each time they breathe.



Mr Davis **snores** when he slept.

Synonym:

wheeze

snort

Antonym:

Prefix / Suffix:

-ing

-ed

Rhyme:

more

war

Link Word:

loudly

heavily



# Grasshopper Word of the Day

Word of the Day:

Pronunciation / Syllables

tunnel  
(*tun-nel*)

Word Class  
(noun / verb)

## Definition:

A tunnel is a long passage which has been made under the ground, usually through a hill or under the sea.



The class explored a model of a **tunnel** in geography.

Synonym:

hole

shaft

Antonym:

Prefix / Suffix:

-ing

-ed

Rhyme:

funnel

Link Word:

dark

long



# Grasshopper Word of the Day

Word of the Day:

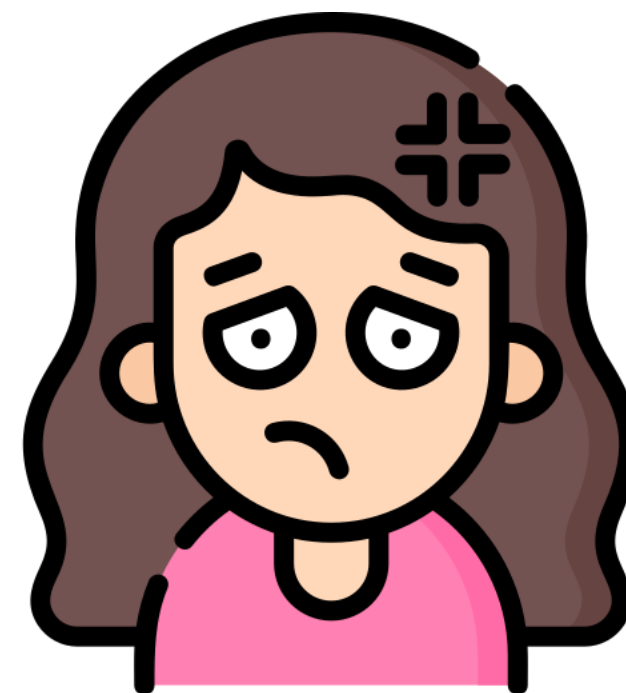
Pronunciation / Syllables

upset  
(*up-set*)

Word Class  
(adjective / verb)

Definition:

If you are upset, you are unhappy or disappointed because something unpleasant has happened to you.



Emma felt **upset** when she misplaced her homework.

Synonym:

hurt

troubled

Antonym:

content

joyful

Prefix / Suffix:

-ing

-s

Rhyme:

met

forget

Link Word:

deeply

clearly



# Grasshopper Word of the Day

Word of the Day:

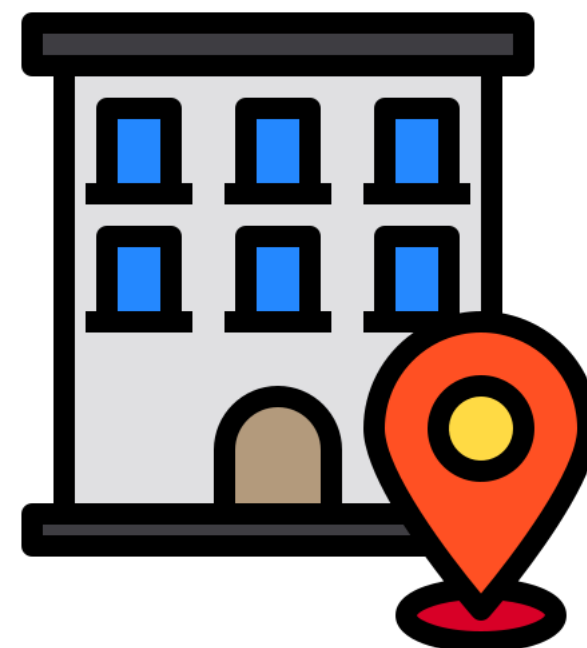
Pronunciation / Syllables

**visit**  
(vis-it)

Word Class  
(verb / noun)

Definition:

If you visit someone, you go to see them and spend time with them.



The class were going to **visit** the science museum.

Synonym:

call

stay

Antonym:

go

Prefix / Suffix:

re-

-ing

Rhyme:

Link Word:

formally

quickly



# Shinobi Word of the Day

Word Class  
(verb)

Word of the Day:

**swerve**  
(swerve)

Pronunciation / Syllables

## Definition:

If a vehicle or other moving thing swerves or you swerve it, it suddenly changes direction, often in order to avoid hitting something.



Harit had to **swerve** to avoid bumping into the desk.

Synonym:

skid

veer

Antonym:

stay

Prefix / Suffix:

-ed

-ing

Rhyme:

curve

nerve

Link Word:

quickly

wide



# Shinobi Word of the Day

Word of the Day:

Pronunciation / Syllables

**sudden**  
(*sud-den*)

Word Class  
(adjective)

Definition:

Sudden means happening quickly and unexpectedly.



Ms Lim made a **sudden** announcement about the quiz.

Synonym:

abrupt

hasty

Antonym:

delayed

gradual

Prefix / Suffix:

-ly

-ness

Rhyme:

Link Word:

noise

decision



# Shinobi Word of the Day

Word Class  
(verb)

Word of the Day:

Pronunciation / Syllables

prefer  
(*pre-fer*)

Definition:

If you prefer someone or something, you like that person or thing better than another, and so you are more likely to choose them if there is a choice.



The class **prefer** working in groups rather than alone.

Synonym:

pick

select

Antonym:

dislike

reject

Prefix / Suffix:

-red

-ence

Rhyme:

refer

deter

Link Word:

strongly

personally



# Shinobi Word of the Day

Word of the Day:

Pronunciation / Syllables

**smug**  
(smug)

Word Class  
(adjective)

## Definition:

If you say that someone is smug, you are criticising the fact they seem very pleased with how good, clever, or lucky they are.



Jill was **smug** after answering all the questions correctly.

Synonym:

pompous  
egotistical

Antonym:

humble  
modest

Prefix / Suffix:

-ly

Rhyme:

dug  
hug

Link Word:

feel  
appear



# Shinobi Word of the Day

Word Class  
(verb)

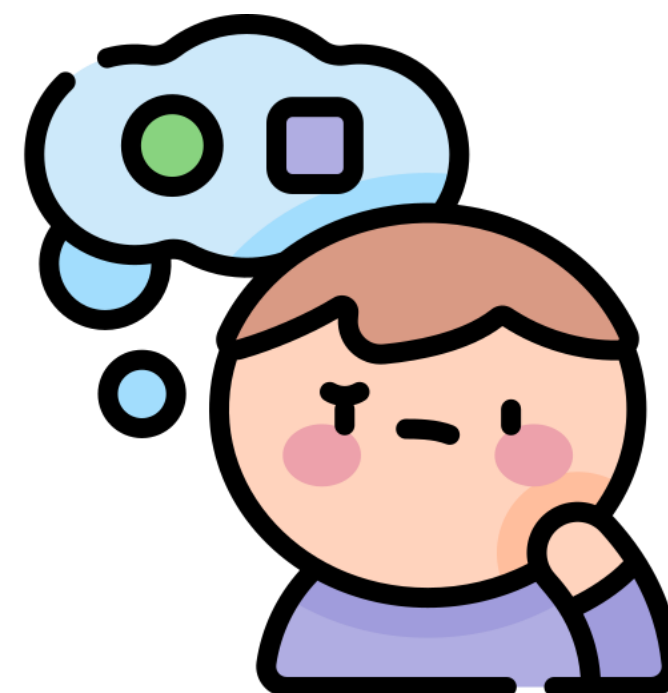
Word of the Day:

Pronunciation / Syllables

obsess  
(ob-sess)

Definition:

If something obsesses you or if you obsess about something, you keep thinking about it and find it difficult to think about anything else.



Ken **obsessed** over getting good results.

Synonym:

engross

haunt

Antonym:

Prefix / Suffix

-ion

-ed

Rhyme:

recess

abcess

Link Word:

patiently

closely

# Vocabulary Laboratory



Describe / Definition:

Use it in a sentence:

**Focus Word** (write below):

**Word Class:**

**Synonyms:**

(words with same / similar meaning)

**Antonyms:**

(words with opposite meaning)

**Draw your sentence:**

**Rhymes:**

(words that sound the same)

**Link Words:**

(Example: football = pitch, team, player)

# Vocabulary Visualiser

Draw the  
**Grasshopper** words  
and bring them to life.



Word: smash

Word: tunnel

Word: snore

Word: upset



# Vocabulary Visualiser

Draw the **Shinobi**  
words and bring  
them to life.



Word: swerve

Word: smug

Word: prefer

Word: obsess



# Matching Meanings

Draw lines from the **Grasshopper** words to their definitions.



## Grasshopper Word

## Grasshopper Definitions

smash

A \*\*\* is a long passage which has been made under the ground, usually through a hill or under the sea.



snore

If you \*\*\* something or if it \*\*\*, it breaks into many pieces.



tunnel

If you \*\*\* someone, you go to see them and spend time with them.



upset

If you are \*\*\*, you are unhappy or disappointed because something unpleasant has happened to you.



visit

When someone who is asleep \*\*\*, they make a loud noise each time they breathe.



# Matching Meanings

Draw lines from the **Shinobi** words to their definitions.



## Shinobi Word

## Shinobi Definitions

swerve

\*\*\* means happening quickly and unexpectedly.



sudden

If you \*\*\* someone or something, you like that person or thing better than another, and so you are more likely to choose them if there is a choice.



prefer

If you say that someone is \*\*\*, you are criticising the fact they seem very pleased with how good, clever, or lucky they are.



smug

If something \*\*\* you or if you \*\*\* about something, you keep thinking about it and find it difficult to think about anything else.



obsess

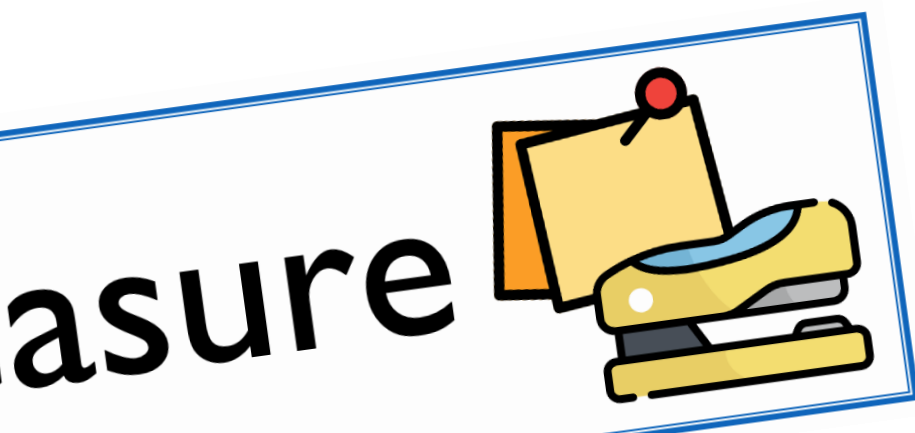
If a vehicle or other moving thing \*\*\* or if you \*\*\* it, it suddenly changes direction, often in order to avoid hitting something.





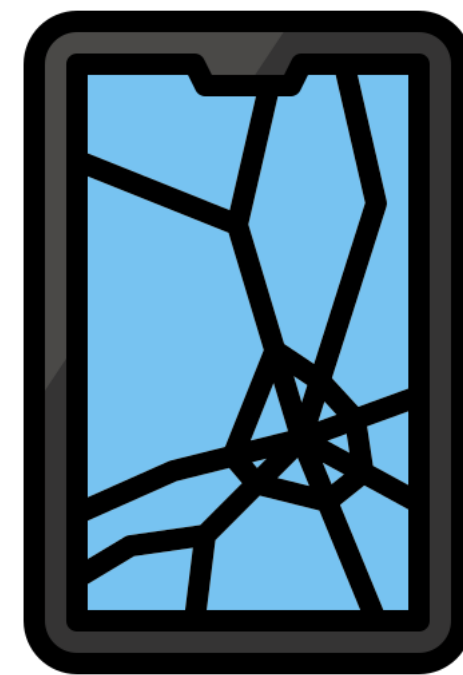
# Display Slips

The following slides are for classroom display. As you teach each Word of the Day, words can be displayed in the classroom to enable pupils to use the taught vocabulary in an independent manner.





smash

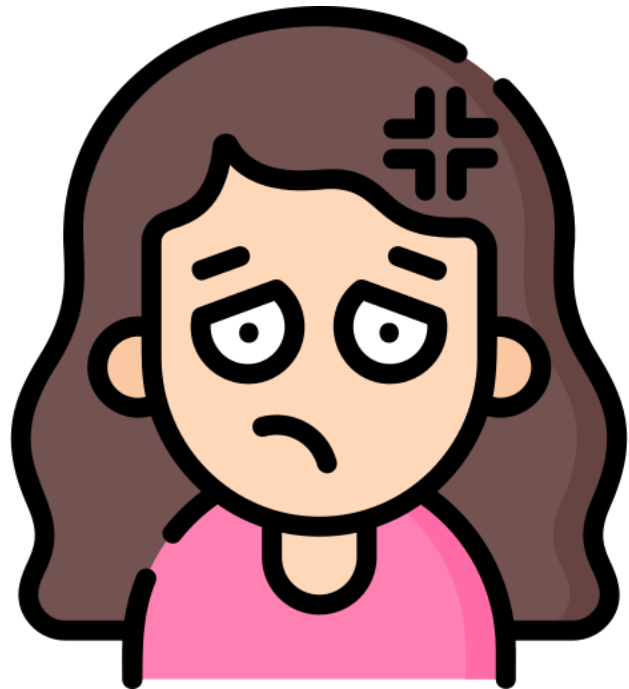


snore





# tunnel



# upset





# visit

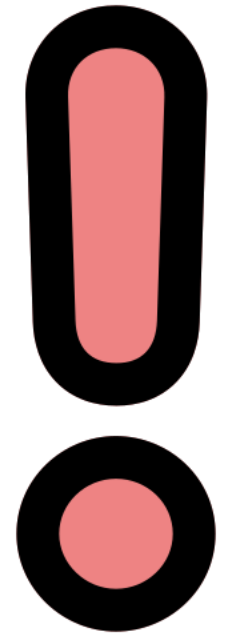


# swerve





sudden

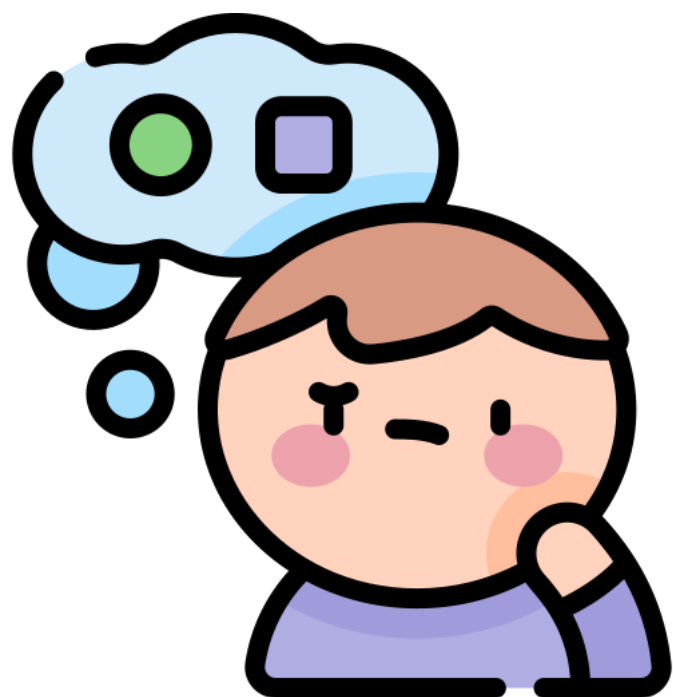


prefer





# smug



# obsess





# Font Variation

The following display slips contain the same words, but have a more regular font, which have a more regular formation of 'a' and 'g'. Futura is the name of the font.




worried



opini

asure

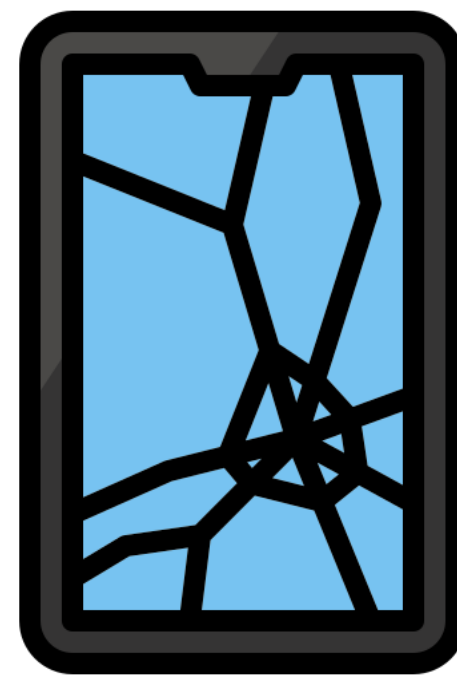


di





smash

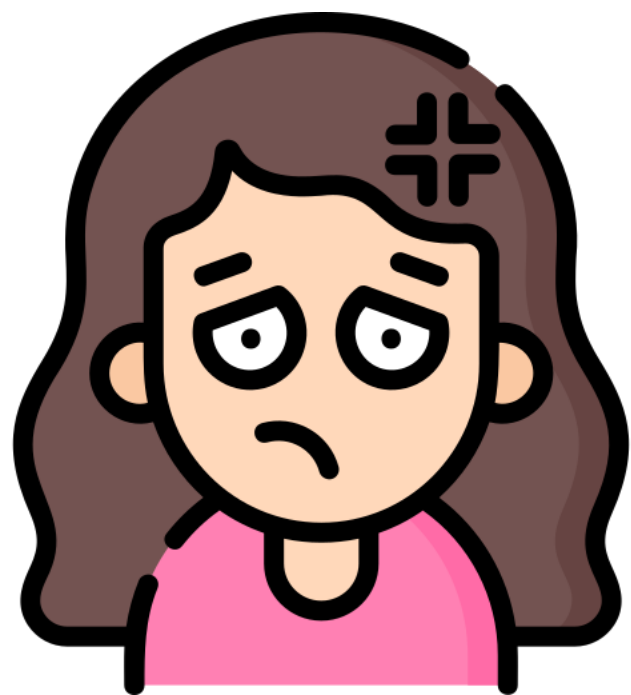


snore





# tunnel



# upset





# visit



# swerve





# sudden !

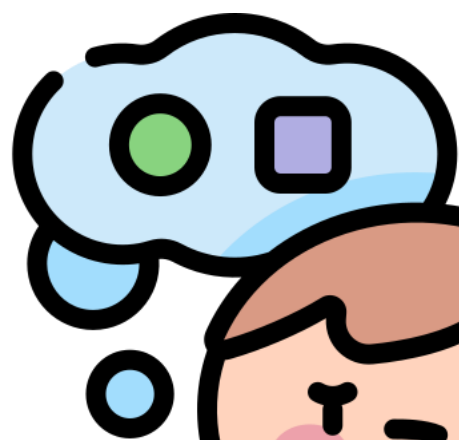


# prefer





smug



obsess

